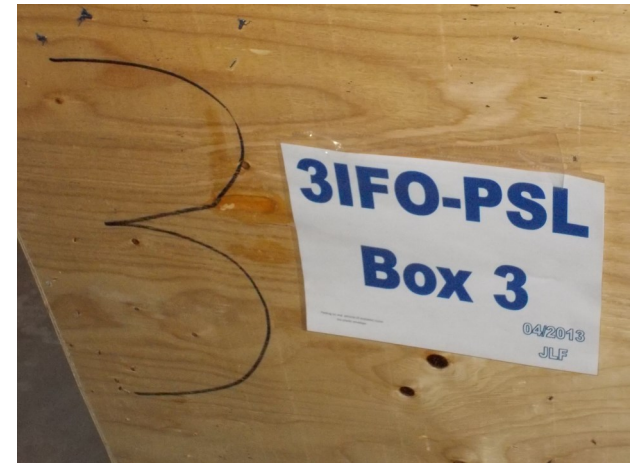
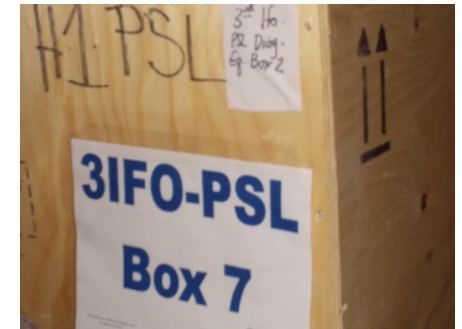
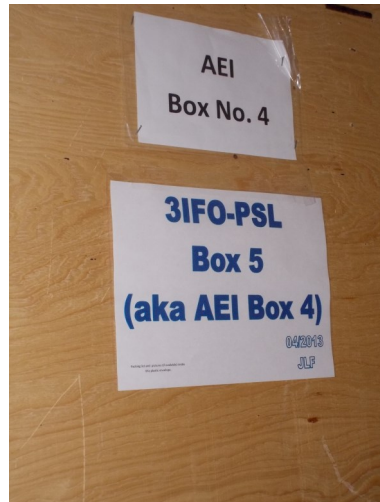
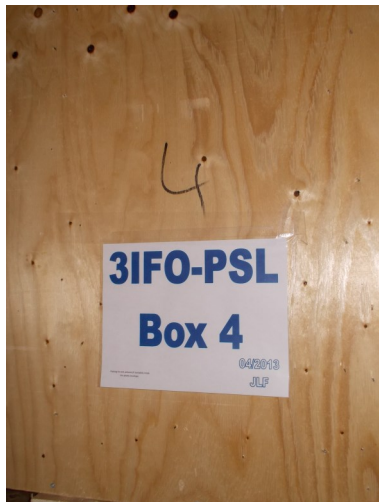


3IFO PSL Crates at Y Mid



The three crates above are 59 in wide x 90 1/2 in long x 44 in height including feet. I have tagged them as 3IFO-PSL Box/Crate 1-2-3 in keeping with their original markings.



The two crates above had previously been identified as Diagnostic Box 1 and Diagnostic Box 2 but have to re-named 3IFO-PSL Box 6-7 to conform with overall 3IFO LTS plan nomenclature. I will black out any pre-existing markings and write correct info on the crates. The nominal contents of these boxes/crates is known from Benno's spreadsheet (H1PSL Coffin and Wooden Crate 3) and Rick/Michael R. inspection information. I will attach a copy of the content information to each crate.

The two crates above are 59 in wide x 43 1/2 in long x 44 in height including feet. I have tagged them as 3IFO-PSL Box/Crate 4 and 5. The nominal contents of Box/Crate 5 are known from Benno's spreadsheet and a copy is attached to the box/crate.