

Coil Driver Measurement
J. Kissel, 2022-01-10
DUT Setup, Dummy OSEM

(weave from *back* of rack to *front* of rack through chassis stack within rack)

BNC Cables ~10 ft

Channel dial on front of box must match output pins (keep fixed during all measurements of a given channel)

Shields connected to Chassis via Breakout

BNC to Clip Leads

Make sure exposed BNC connections aren't touching other chassis electrically

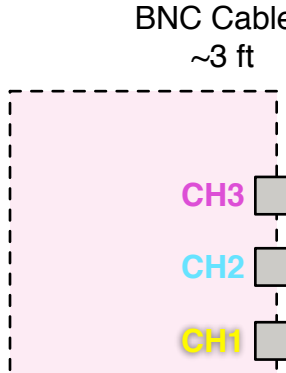
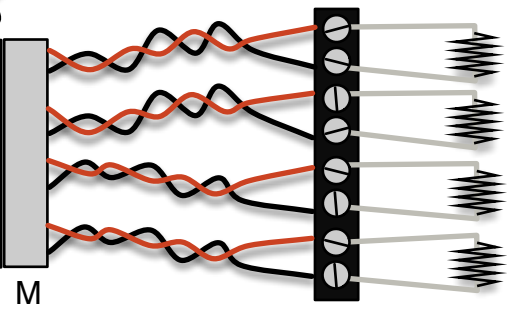
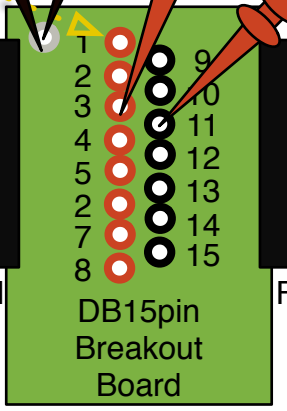
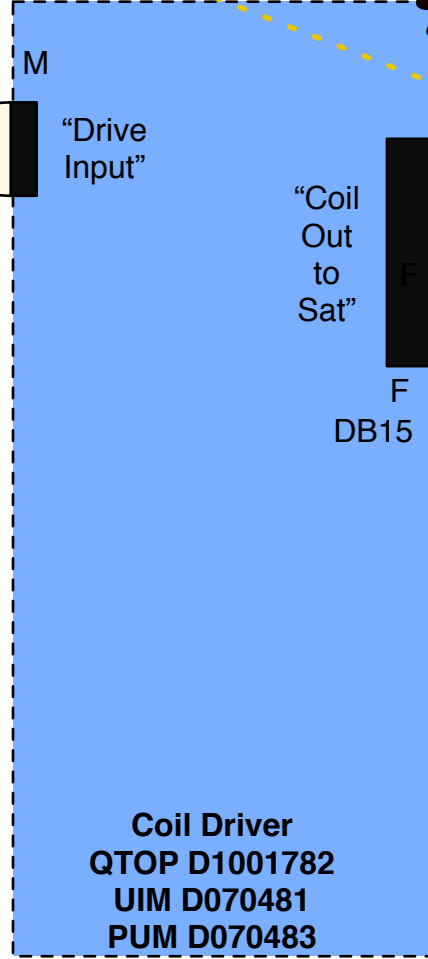
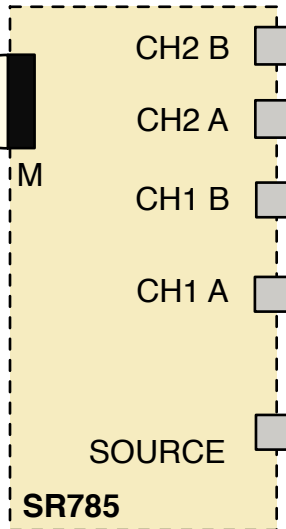
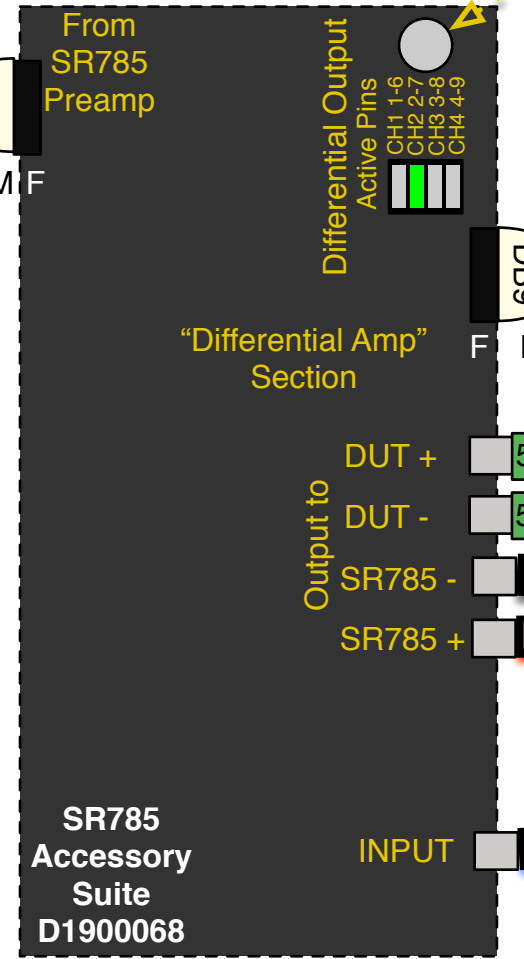
DB9 Cable ~3 ft

DB9 Cable ~3 ft

50 Ohm BNC Terminators

Coil Pins Are:
 CH1 = 1 & 9
 CH2 = 3 & 11
 CH3 = 5 & 13
 CH4 = 7 & 15

Hand-made Dummy 40 Ohm Load Device



O-Scope not strictly necessary, but *very* helpful in terms of understanding signal levels in/out of the SR785 Accessory Box and into PUM Driver

BNC Cables ~3 ft

ALL OTHER CHASSIS / CABLE CONNECTIONS NOT SHOWN MUST REMAIN AS NORMAL

Back Front

Back Front

Front Back

Back Front