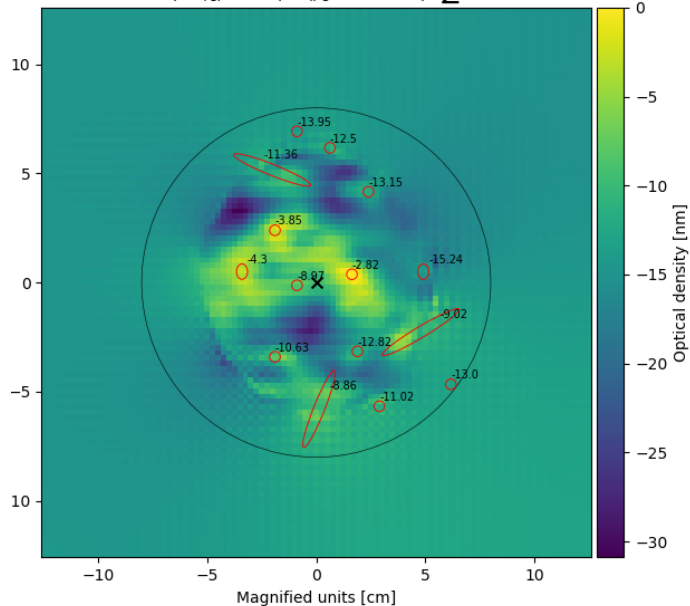


For all images t_0 = when IFO gets to injecting 60W

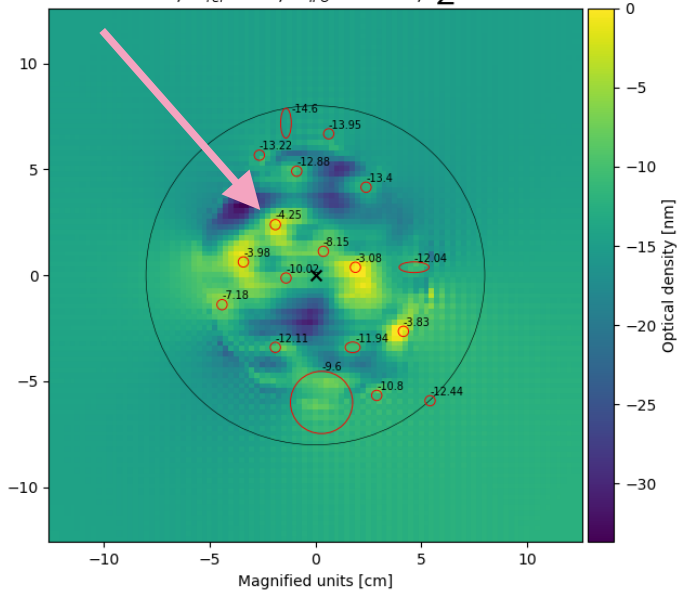
H1:ETMX $t_{ref} = 1358298374$

$t = 1358298394$, $dt_{ref} = 20s$, $dP_{IFO} = 0.01$ W, $d\Sigma Pixels = 97.43$ %



H1:ETMX $t_{ref} = 1358298374$

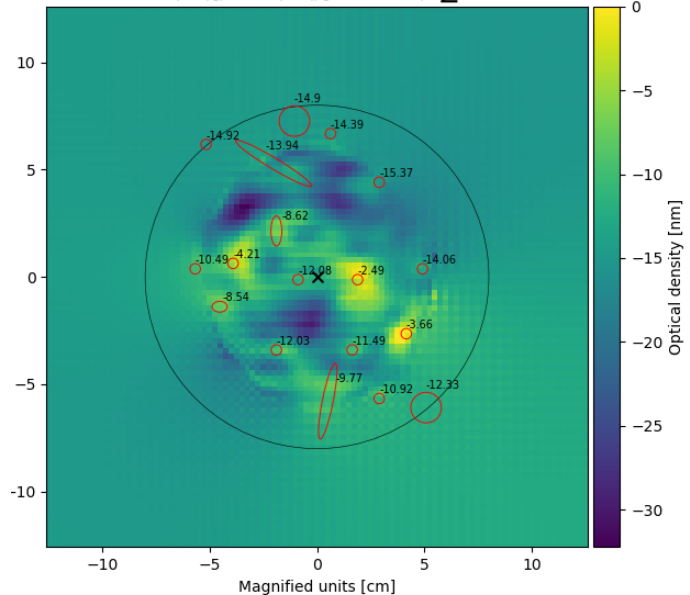
$t = 1358298415$, $dt_{ref} = 41s$, $dP_{IFO} = 0.01$ W, $d\Sigma Pixels = 97.64$ %



$t = +20s$

H1:ETMX $t_{ref} = 1358298374$

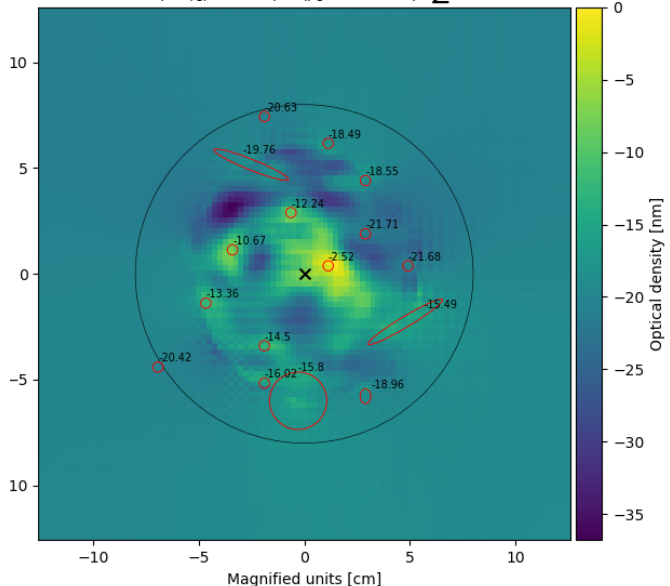
$t = 1358298435$, $dt_{ref} = 61s$, $dP_{IFO} = 0.02$ W, $d\Sigma Pixels = 99.32$ %



$t = +40s$

H1:ETMX $t_{ref} = 1358298374$

$t = 1358298498$, $dt_{ref} = 124s$, $dP_{IFO} = 0.01$ W, $d\Sigma Pixels = 99.23$ %



$t = +60s$

$t = +120s$

