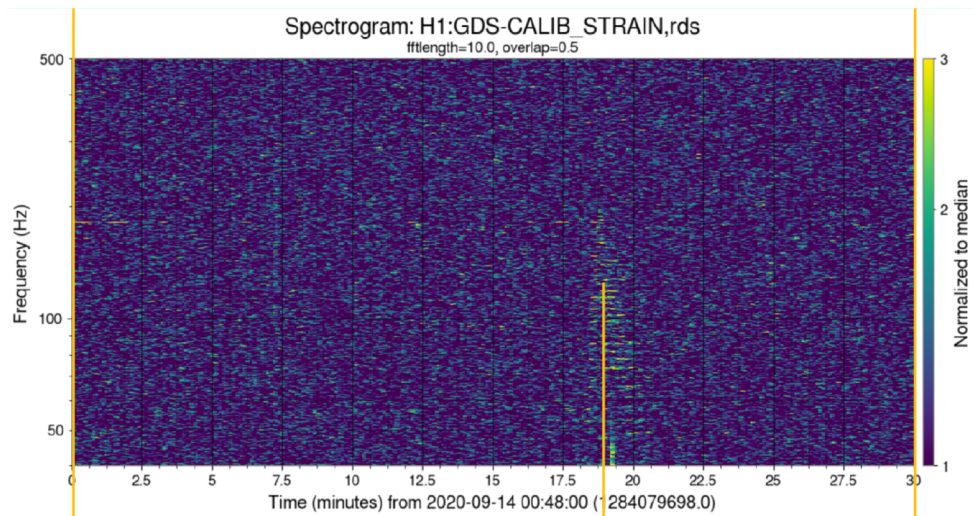
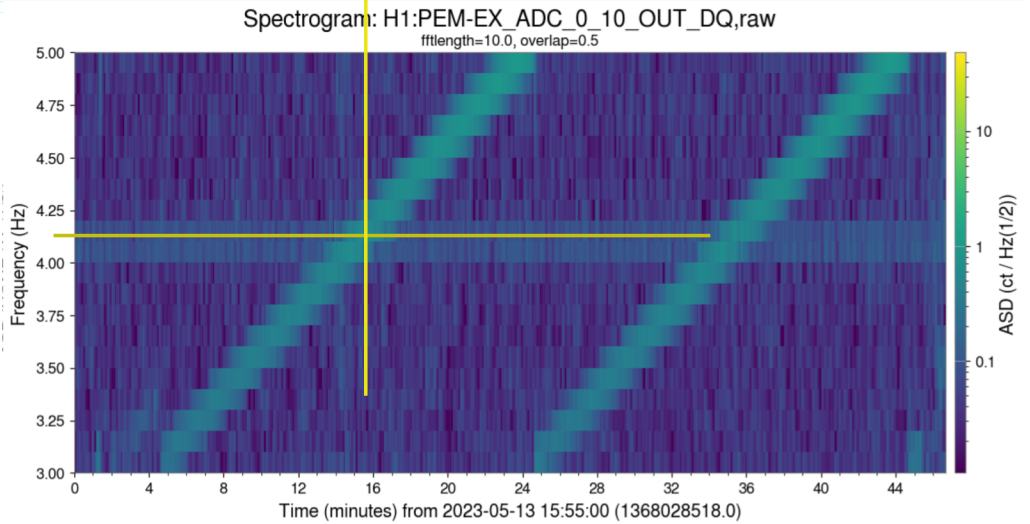
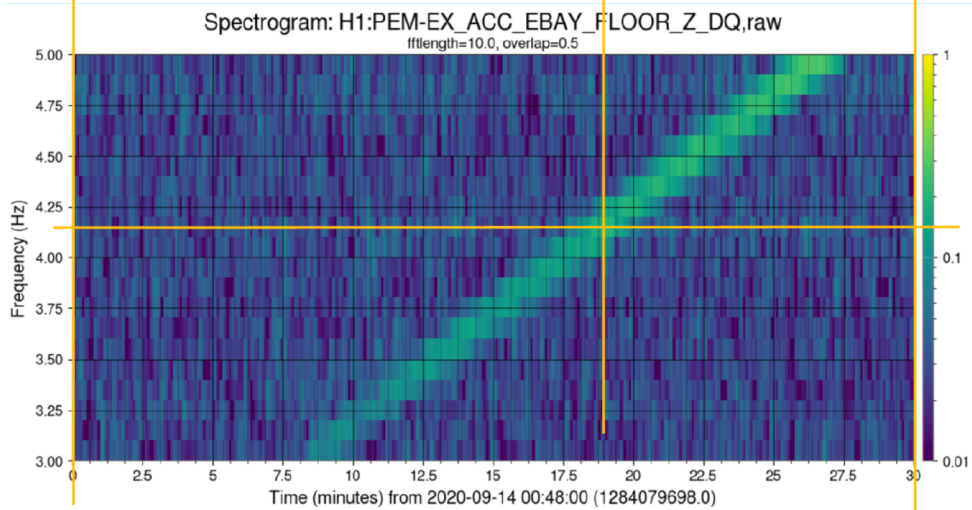
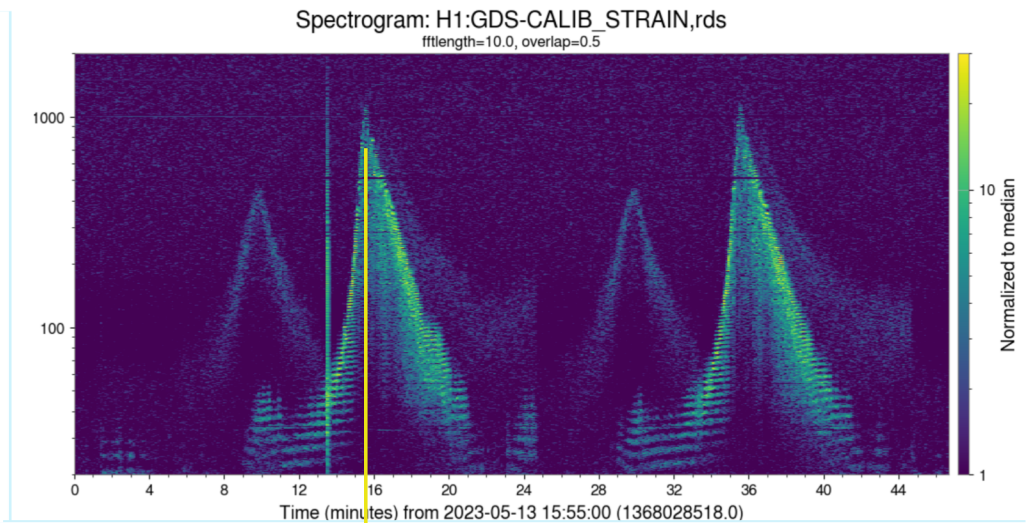


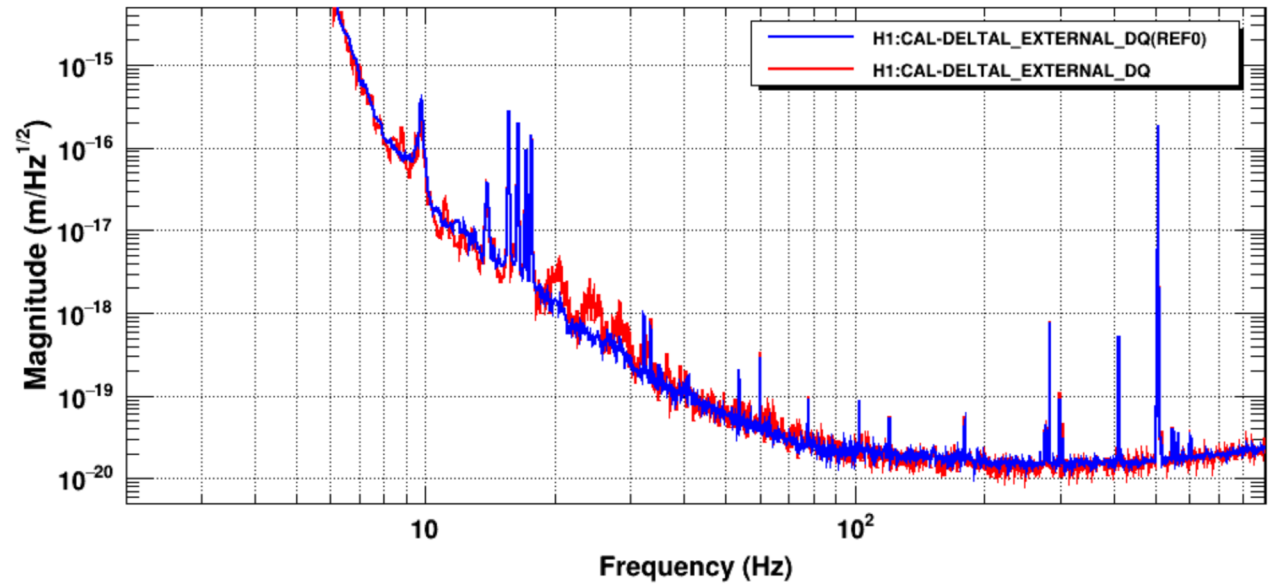
Figure from Sept. 2020 alog, showing noise resonance of ETMX cryo-baffle at 4.1 Hz (LHO alog 56857)



Recent repeat of shaking showing that noise is generated at about the same frequency and Q, but with much greater amplitude relative to the background.



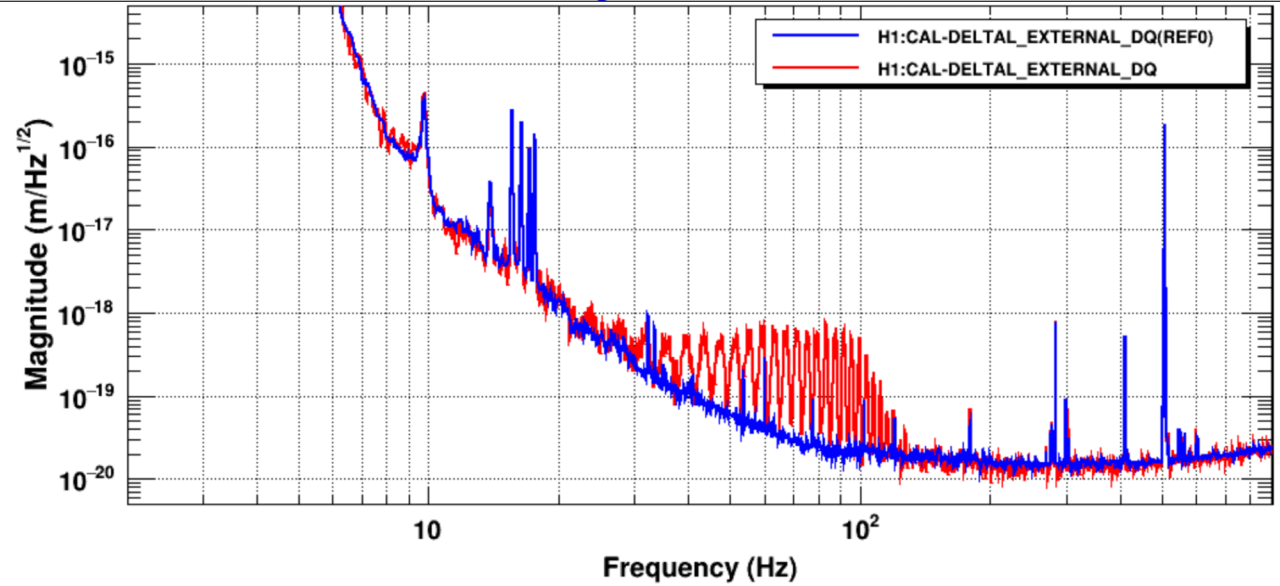
Two stages in excitation of the EX cryobaffle



\*T0=13/05/2023 17:04:56

\*Avg=1746/Bin=4L

BW=0.0937493



\*T0=13/05/2023 17:04:56

\*Avg=1746/Bin=4L

BW=0.0937493