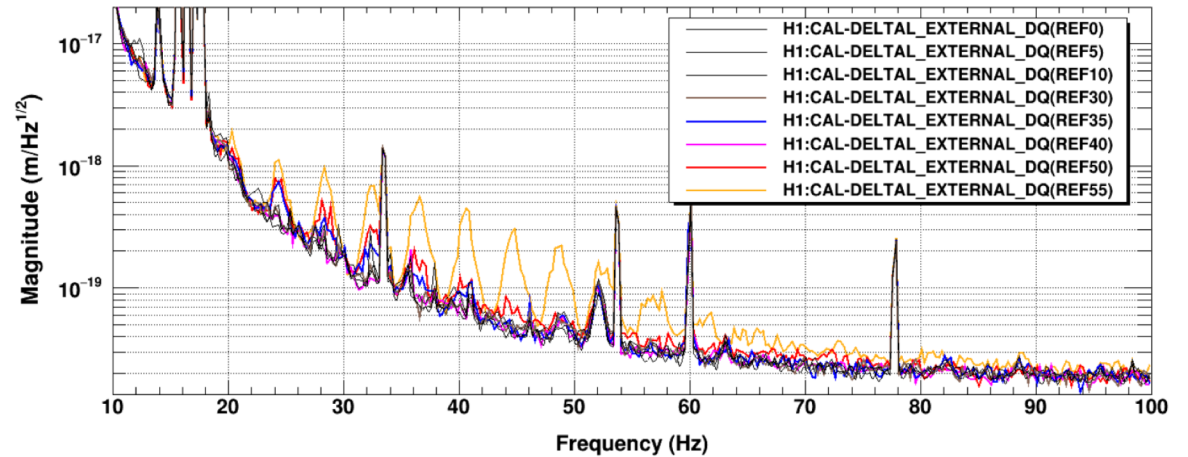


At 75W cryobaffle peaks begin showing in DARM when the 4.1 Hz level is increased above background by about 1.5

Colors are coordinated between plots, thin black lines show levels with no injections

DARM



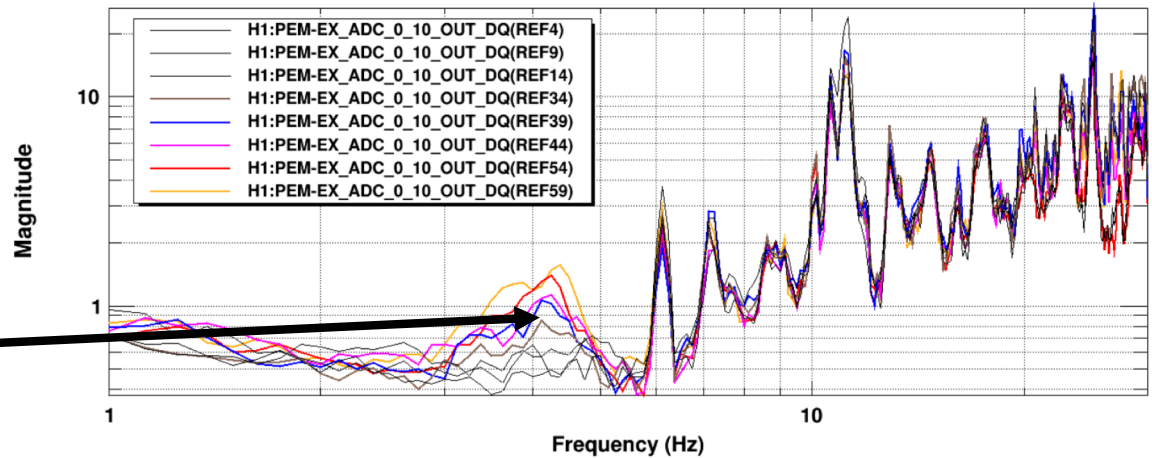
*T0=20/06/2023 21:31:50

Avg=30/Bin=2

BW=0.1875

Power spectrum

Accelerometer mounted on outside of beam tube at location of cryobaffle



Peaks start showing when level reaches about here

EX scattering not likely to be strongly limiting at 75W because peak structure is not visible

Vertically offset pectrum during 4Hz injection showing what the peak structure of the cryobaffle looks like

Nominal 1000-average DARM spectrum at 75W with arrows indicating the frequency of the cryobaffle peaks.

