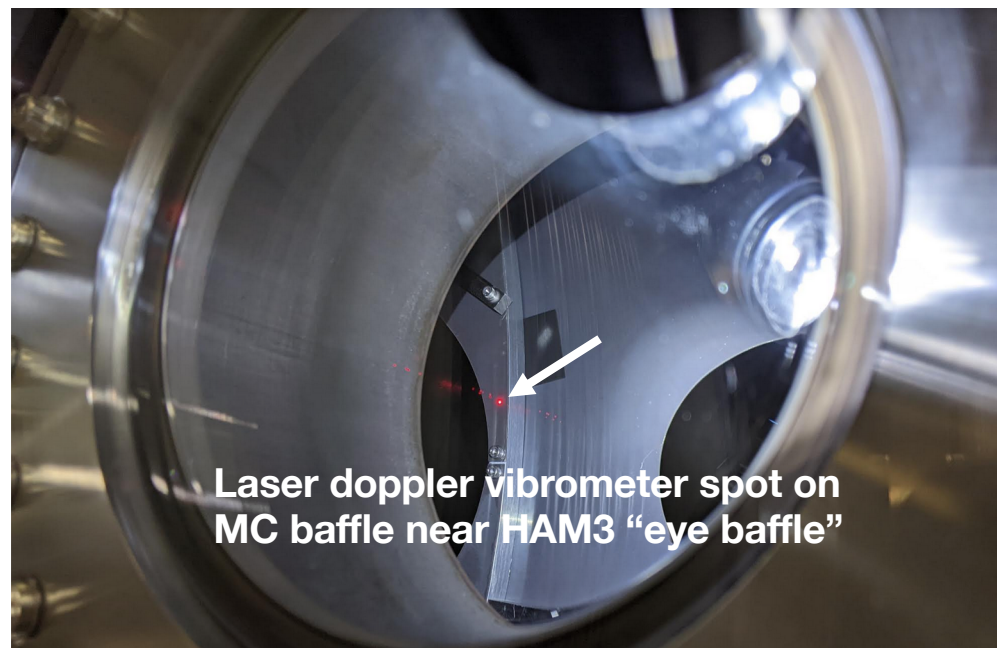




Laser doppler vibrometer at MC3 camera port near HAM3



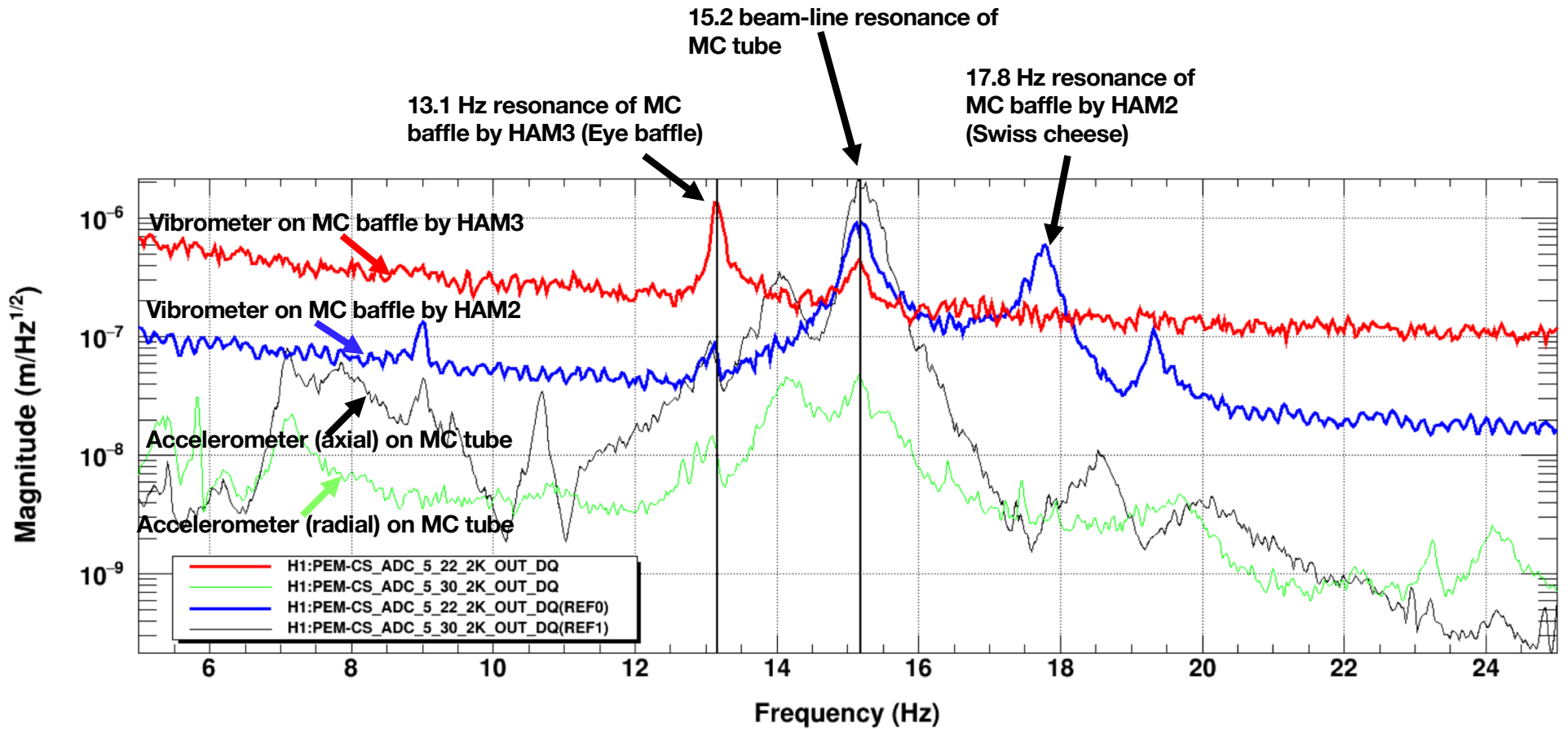
Laser doppler vibrometer spot on MC baffle near HAM3 "eye baffle"



Laser spot on MC baffle near HAM2 "swiss baffle". A flashlight was used to find the most reflective location – required for good vibrometer signal.

More on next page

# Vibration spectra during broad-band shaking of IMC-tube (shaking necessary to reach sensitivity of laser vibrometer)



\*T0=05/12/2023 19:55:27

Avg=30

BW=0.0468742