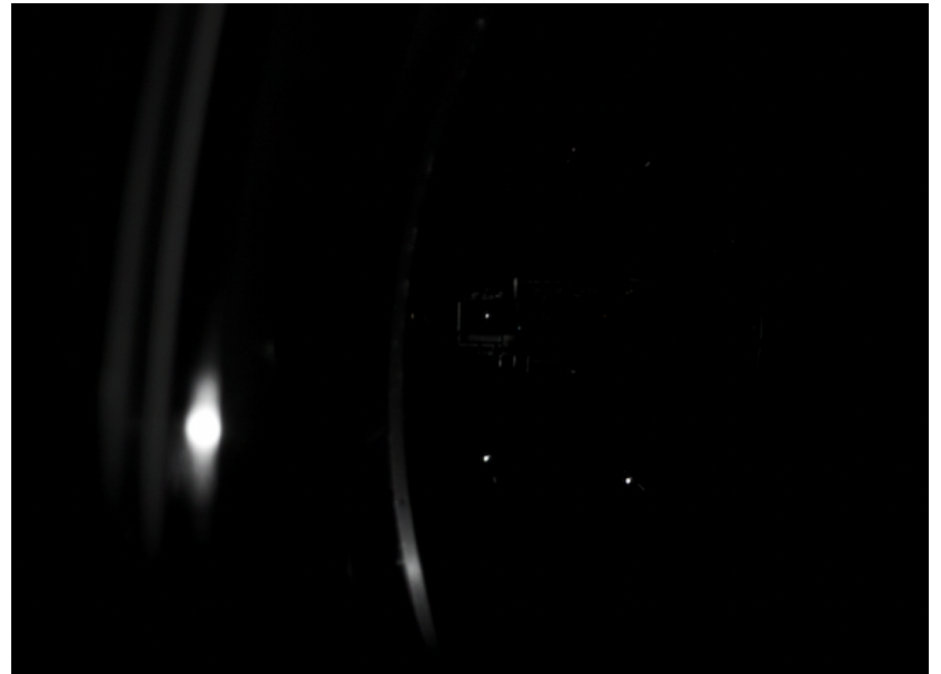


IR camera and illuminator showing view from MC3 towards MC2 and retro-reflected light

Extremely bright spot of retro-reflected light from MC3



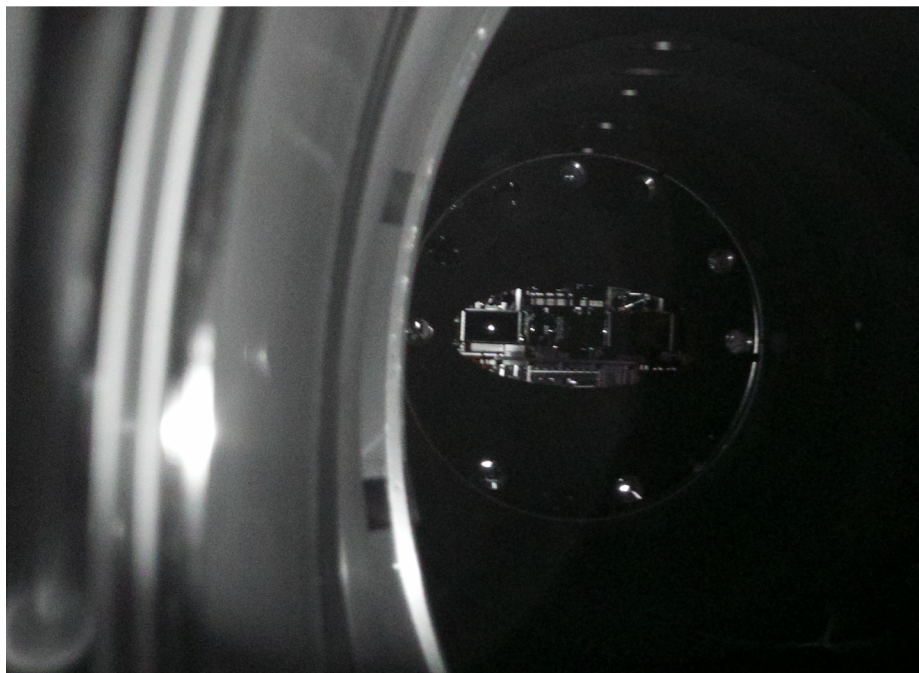
At lower exposure, spot is still saturated.



Covering up the source of the glint to identify the source. I also checked that this portion of the wall could "see" the MC3 optic, since my cameras are not right at the optic.

**IR camera photograph with
aperture and IR illuminator
centered on MC3 baffle hole**

Before unplanned baffle



Baffled

