

Input arm coupling reductions

Speaker injection driving input beam tube 20-300 times background to raise low-amplitude, low-frequency scattering noise above 100 Hz for visibility

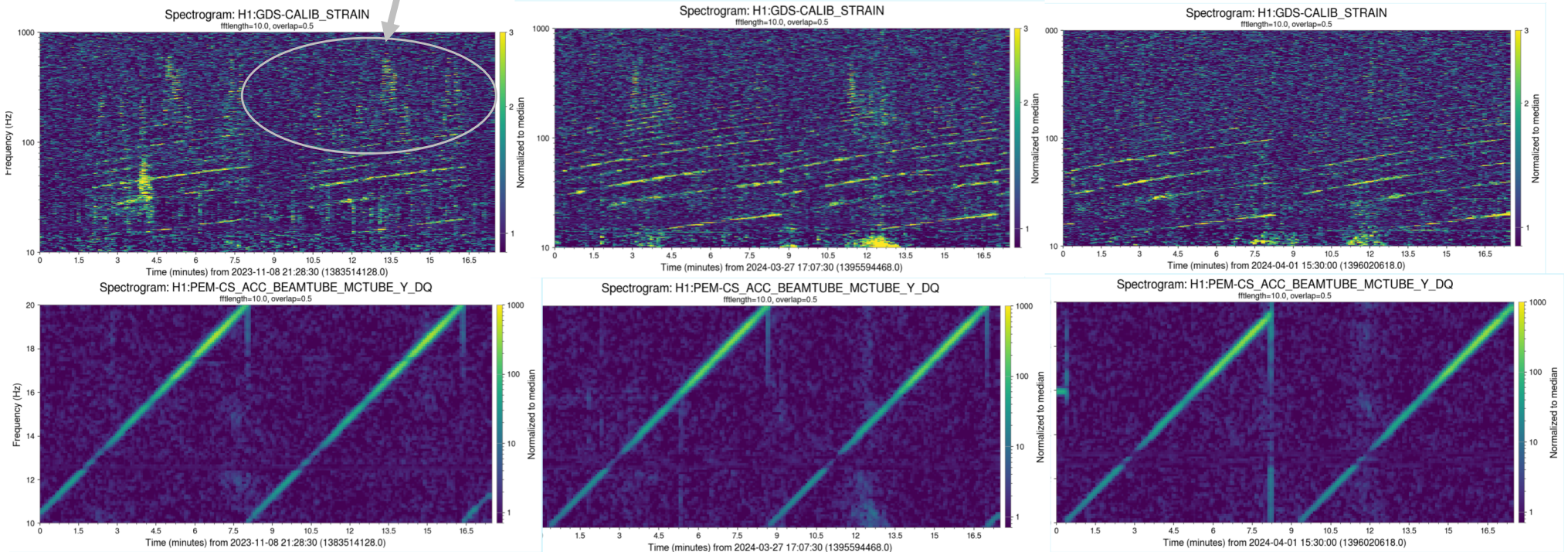
Before break

Immediately after break

After angling ITMY compensation plate in yaw

Top row: DARM

Noise we wanted to reduce



Bottom row: accelerometer showing motion of the input arm beam tube during frequency sweeps from speaker

Lines show frequency exciting some of the noise features

Before break

Immediately
after break

After angling ITMY
compensation plate in yaw

