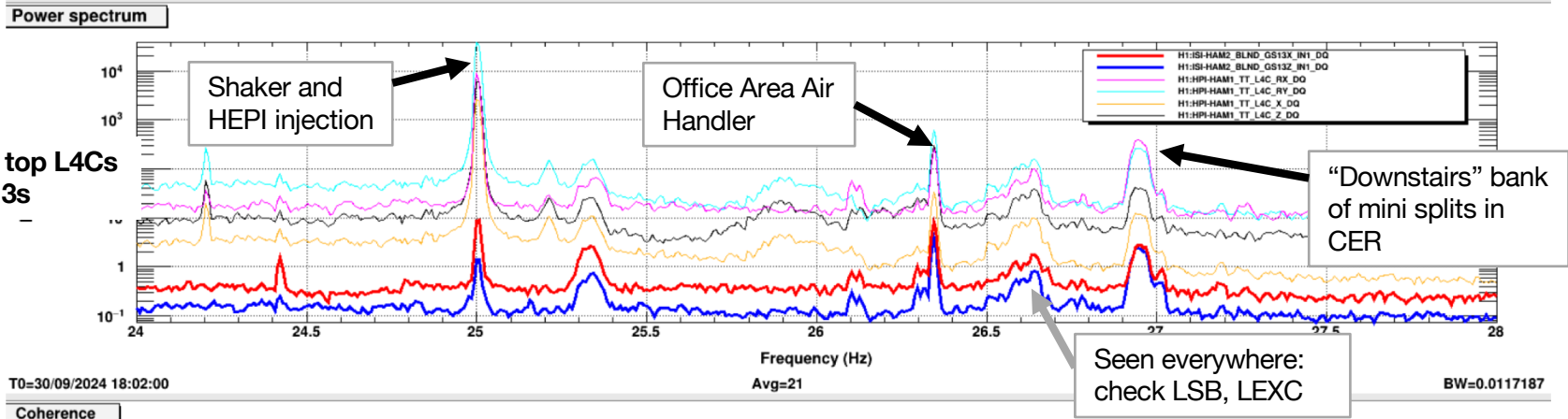
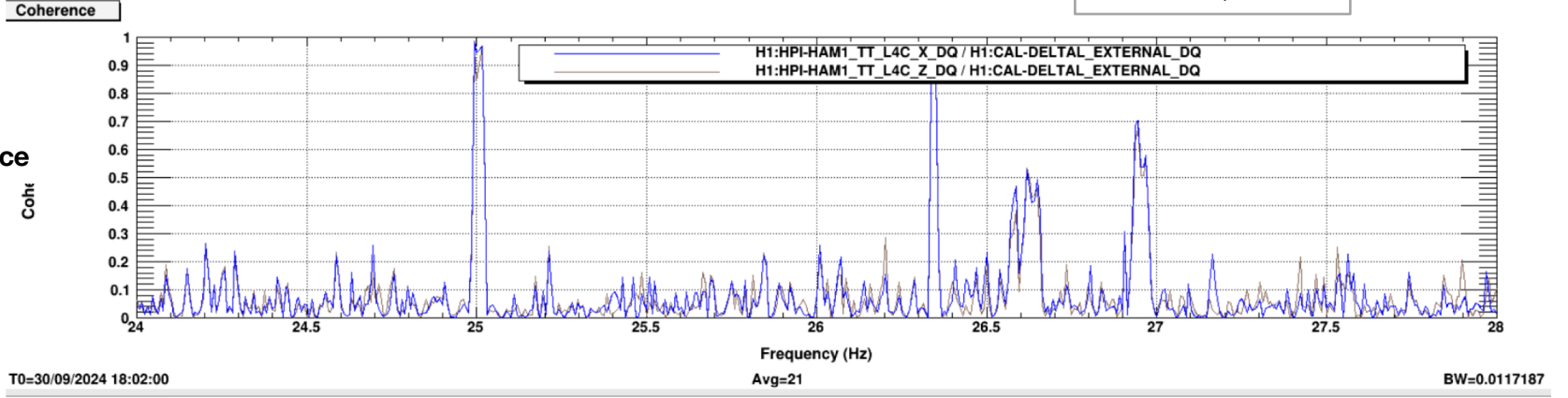


Thin lines: HAM1 table top L4Cs
 Thick lines: HAM2 GS13s

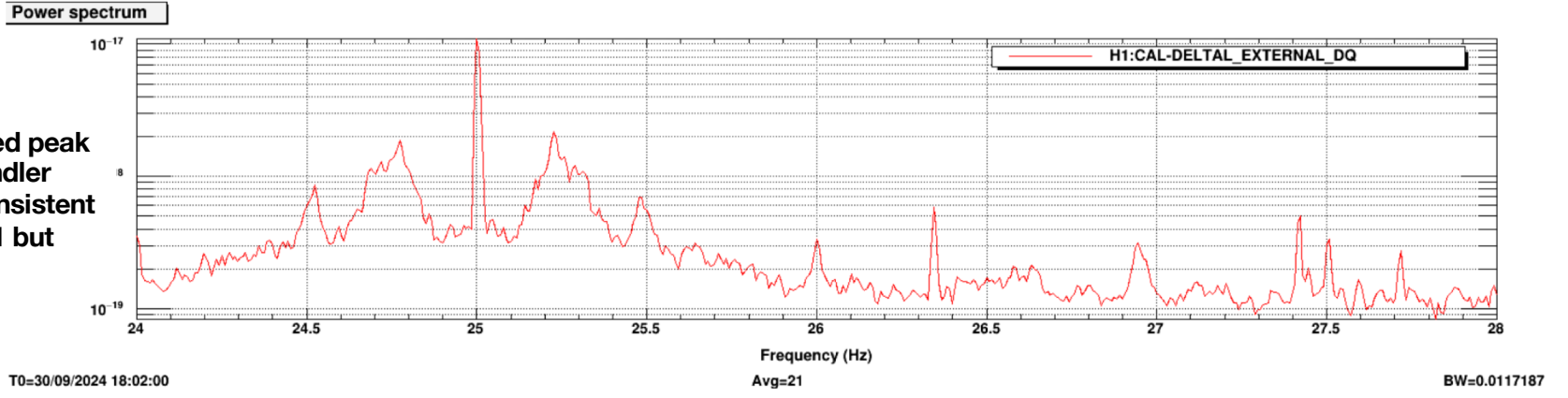


DARM HAM1 coherence

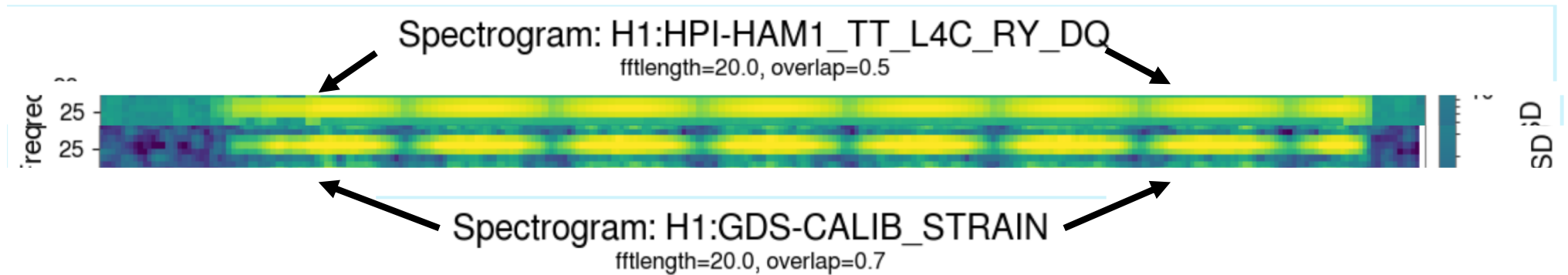


DARM

The ratio of the injected peak at 25 Hz to the Air Handler peak at 26.35 Hz is consistent with coupling at HAM1 but not HAM2



HAM1 L4C beats match DARM beats



But HAM2 beats also match pretty well

