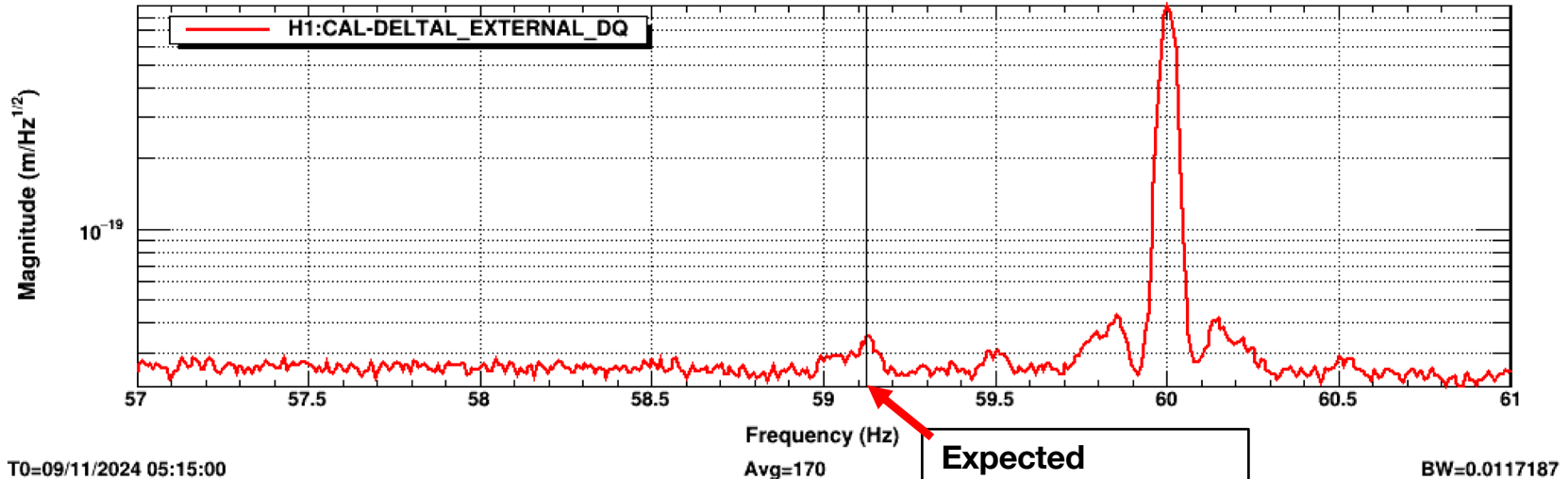


Microphone and accelerometer signals align with peak in DARM at high resolution

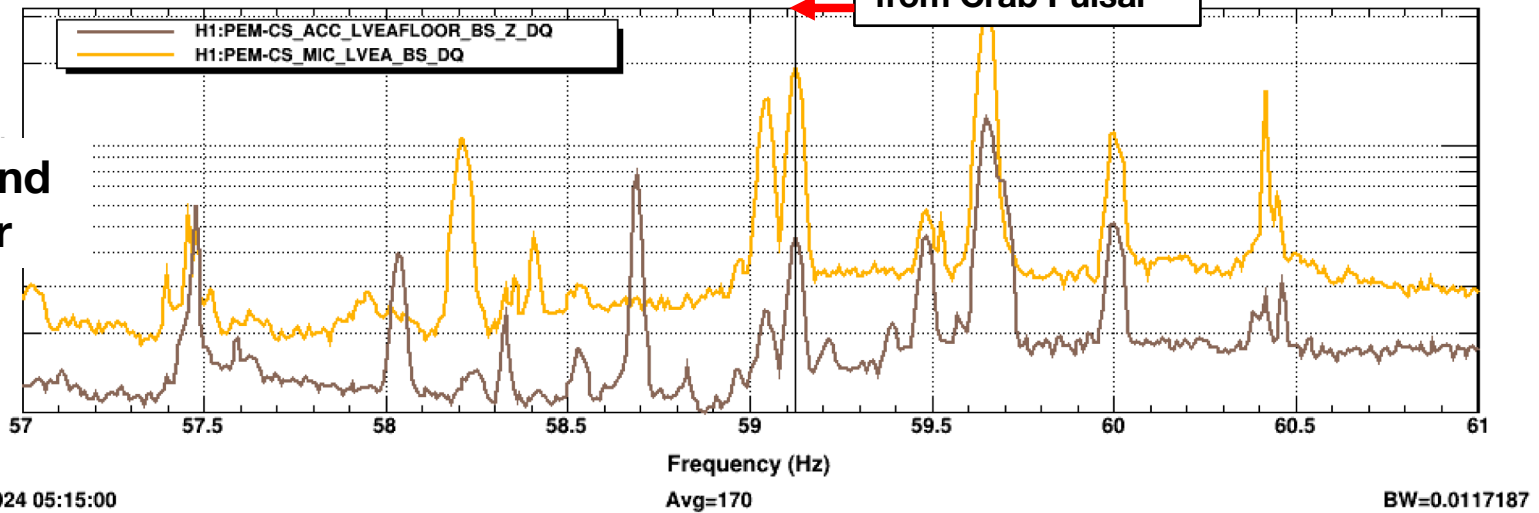
DARM



Power spectrum

Expected frequency of GWs from Crab Pulsar

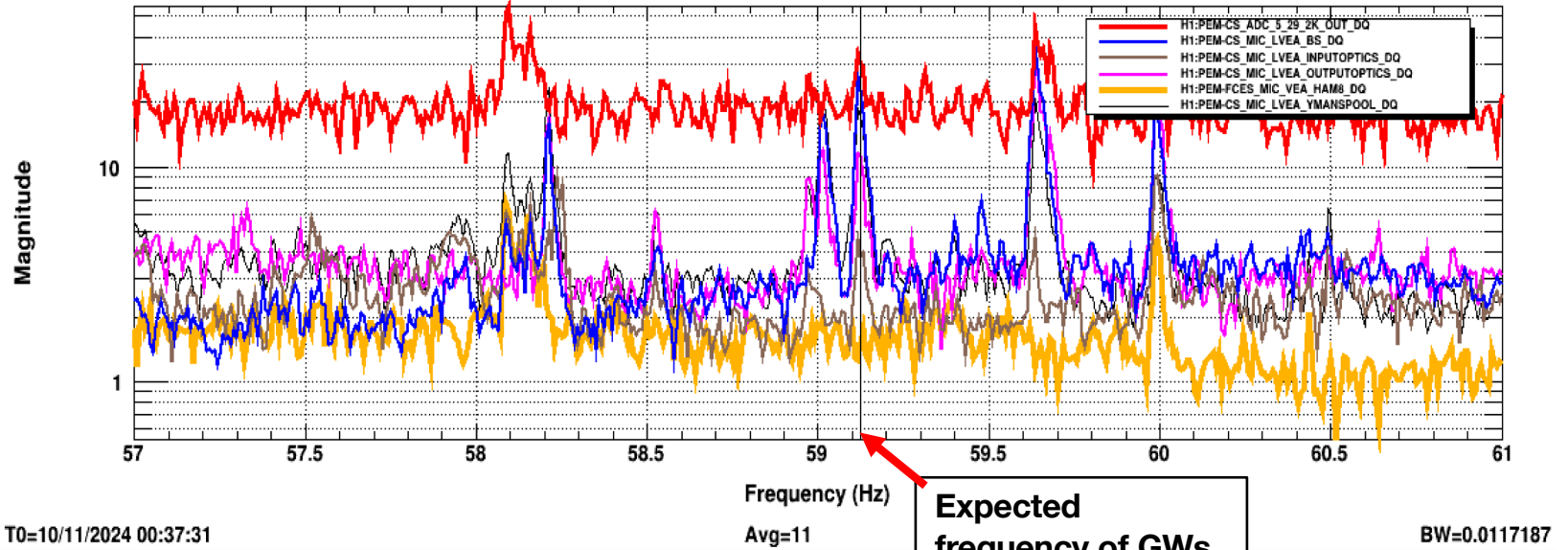
Microphone and accelerometer



SNR of peaks in Crab region tends to be greatest in microphone signals

Red is the movable microphone, other traces are permanent microphones

Movable microphone near Staging Building



Movable microphone near TCS chillers

