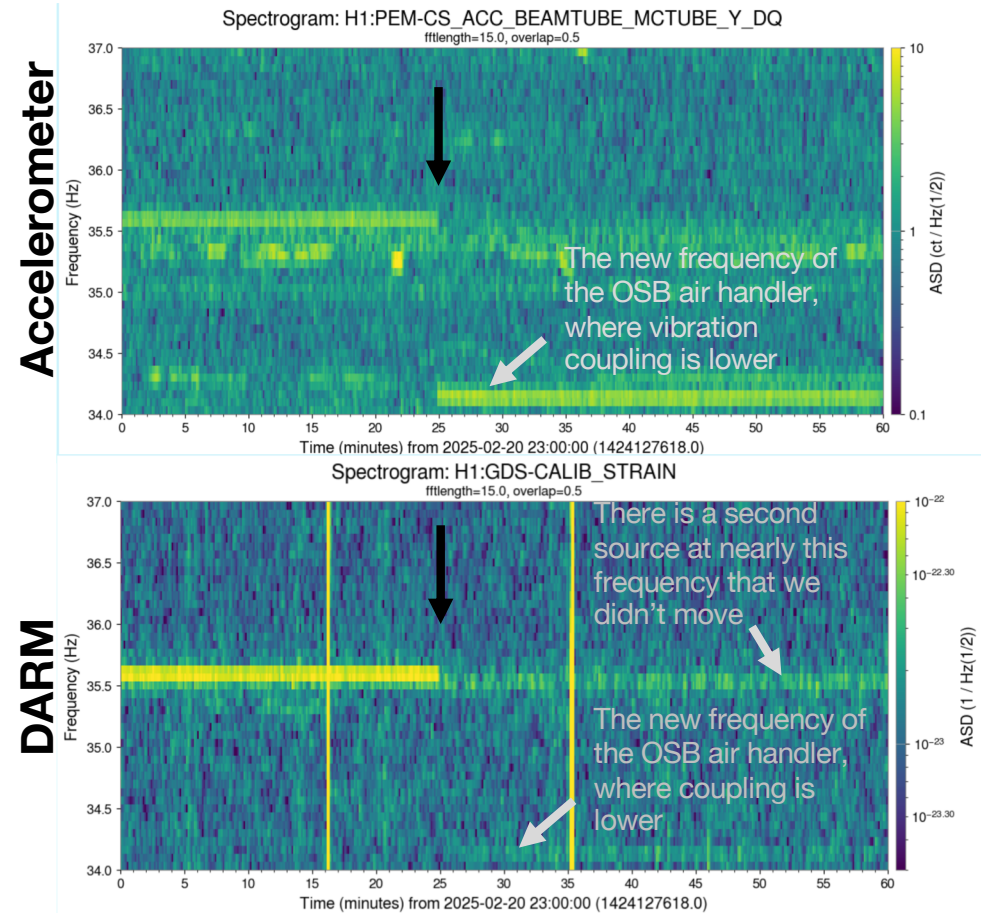
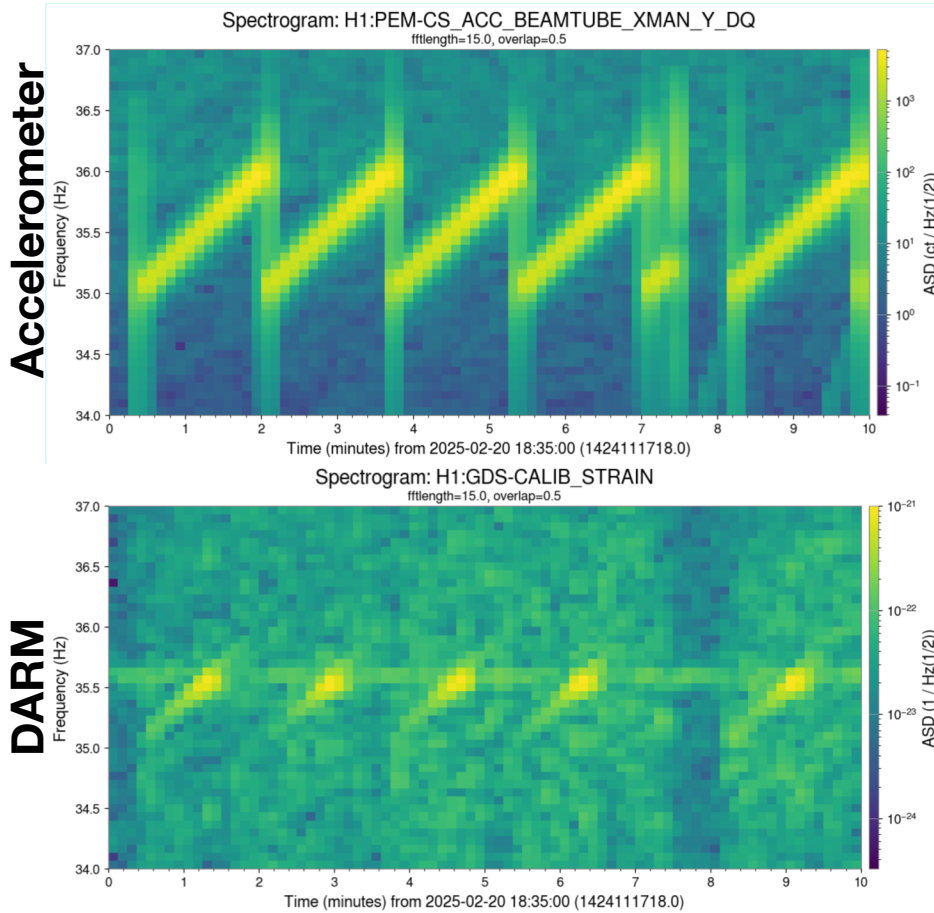


Repeated vibration sweeps showing that there is a maximum in vibration coupling at 35.5 Hz

The OSB air handler was at this coupling maximum, until the frequency was changed at the black arrow.



See second page for DARM improvement spectra

**DARM before and after  
changing the OSB air  
handler variable frequency  
drive from 72 Hz to 69 Hz.**

**This moved the frequency  
of the peak from just  
below 36 Hz to just below  
34.5 Hz, where the  
vibration coupling is  
lower.**

