

1 Nov 2013

BSC 3

1 T M X

	1	2	3	4
V	548	452	626	430
T	479	636	451	485
L	611	519		

} Some differences from last time 24 Oct  
151 balancing valve table should be revisited

IAS says  $\uparrow$  Up 3, North 6" 3.6

Tues  
5 Nov

V	547	451	627	431	} After Lock, SUS moves, $\uparrow$ susp ~6mmN, Unlocks
T	479	635	452	485	
L	612	519			

1 Tap all springs

V	495	397	576	378	$\Delta \Rightarrow$ 52.5 mils
T	477	637	450	484	
L	613	521			

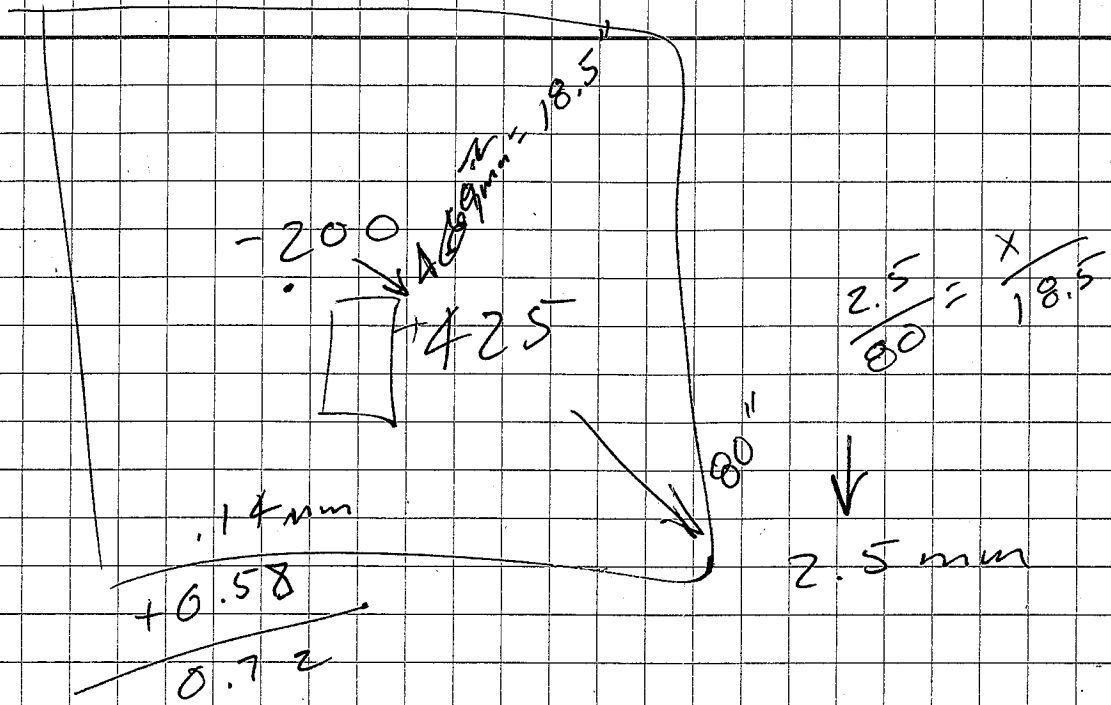
1 Tap all Springs

V	442	345	522	324	$\Delta \Rightarrow$ 53.25 mils
T	478	636	450	482	
L	613	521			

2.7 mm Total

2060 0      0 2150  
2170 0      0 2180  
BSC  
3       $\rightarrow$  North  
2170 0      0 2330  
2180 0      0 2390

IAS says go .2mmN .09mm W .14m Up 1.6mrad CW  
 $1.6 \text{ mrad} = \frac{x}{79''} \Rightarrow x = 3.2 \text{ mm}$



BSC 3 Thurs  
7 Nov 2013

	1	2	3	4
V	442	347	521	324
T	478	636	451	481
L	613	521		

Good all but  
two

1 T CW all springs

V	<del>437</del> 322	344	518	322
T	402	714	372	563
L	572	555		

Δ V	+5	+3	+3	+2	
T	76	-78	79	-82	78.75 mils
L	41	34			

1/2 T CW all springs

<del>V</del>	435	342	518	323
T	362	757	325	607
L	549	573		

Δ	40	-43	47	-44	43.5 mils
---	----	-----	----	-----	-----------

$$\frac{122.25}{43.5} = 3.1 \text{ mm}$$

ΔX -5 mils S

ΔY 12 " W

IAS sample of 160 mrad's CW

# BSC3 7 Nov 2013 - cont IAS

IAS Sugs 90  $\mu$ rads ccw  $\rightarrow$  90  $\frac{1}{6}$ T all ccw  
 IAS Sugs 125  $\mu$ rads ccw  $\rightarrow$  90  $\frac{1}{12}$ T all ccw  
 IAS Sugs 35  $\mu$ rads!

	1	2	3	4
V	436	342	522	325
T	374	741	338	<del>695</del>
L	554	565		5

Good Yaw

	BS HI	PS	ELEV	DESC
Mon	-240.0 mm		2.2 mm	V on west wall of next TGT 402
	-237.8 mm			
Red		+172.1 + Rod offset	+168.3 mm	SE BSC3 OT
			168.5	W
			168.2	NE
		$\frac{1}{2}$ T D west Springs		
			168.2	NE
			168.2	SE
			168.4	W
		$\frac{1}{12}$ T D west Springs		
			168.3	W
			168.2	SE
			168.2	NE
		+240 mm V		Back site ched

Nominal  
 is 0 T height  
 1661.7  
 2.8  
 1658.9

	1	2	3	4
V	444	350	520	324
T	373	743	338	595
L	554	565		

Good Level

21300	02120
20600	02260
22200	02280
21100	02480

BSC 3  $\rightarrow$  N

from  $\Delta X$   $\sim 0.1$   
 $\Delta Y$   $\sim 0.2$  mm south  
 from  $\Delta Yaw$  1.5 mil northwest  $\rightarrow \sim 20 \mu$ rads CW