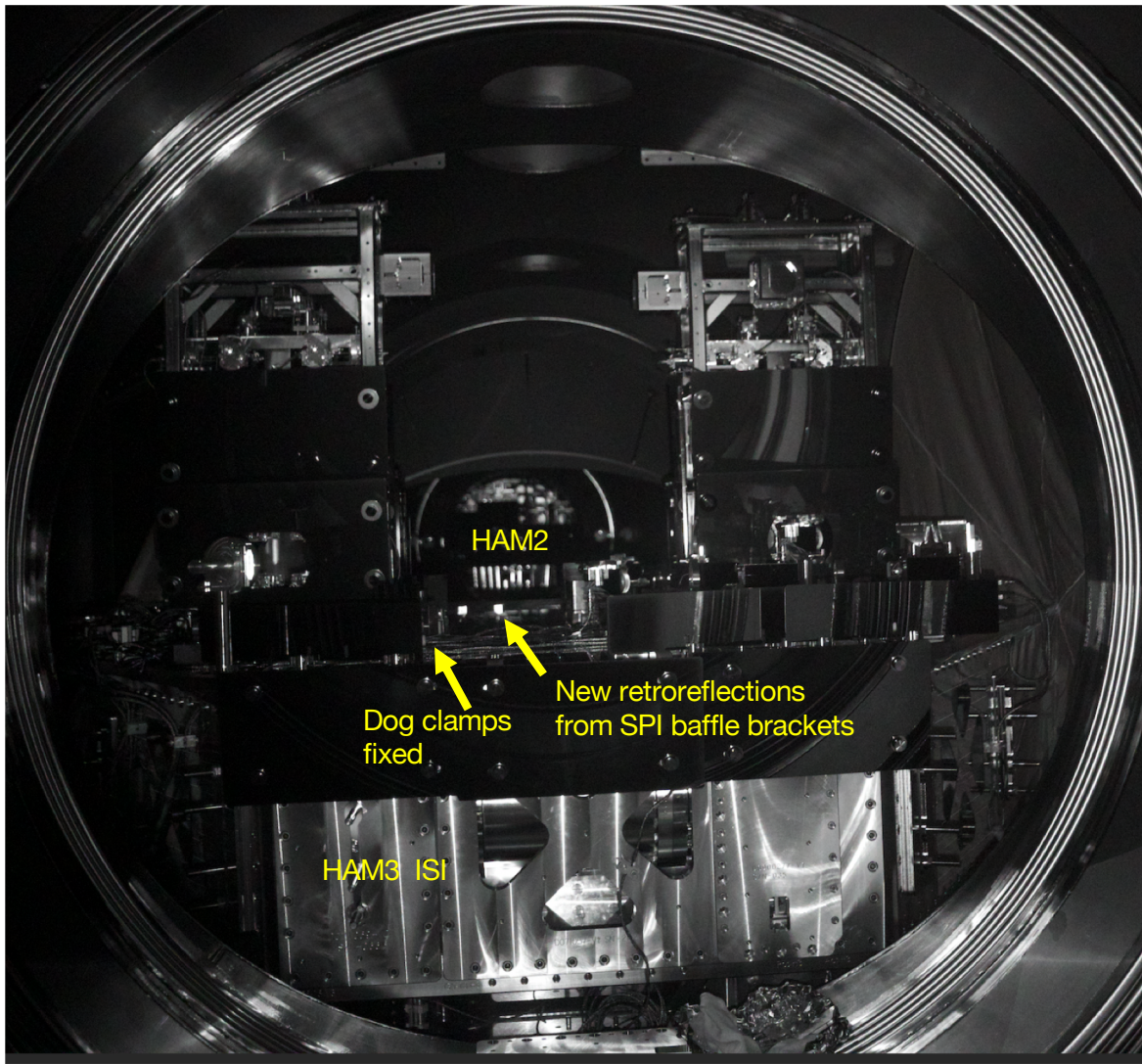
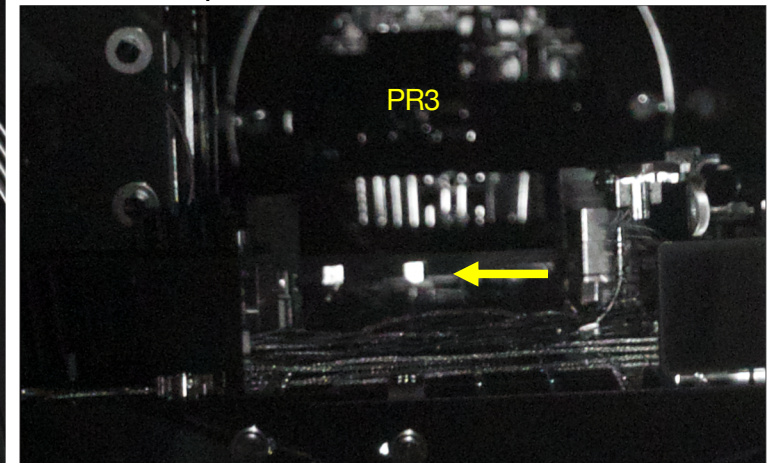


BBS beam spot photo showing reflectors of 960 nm IR light scattered from BBS toward HAM3.

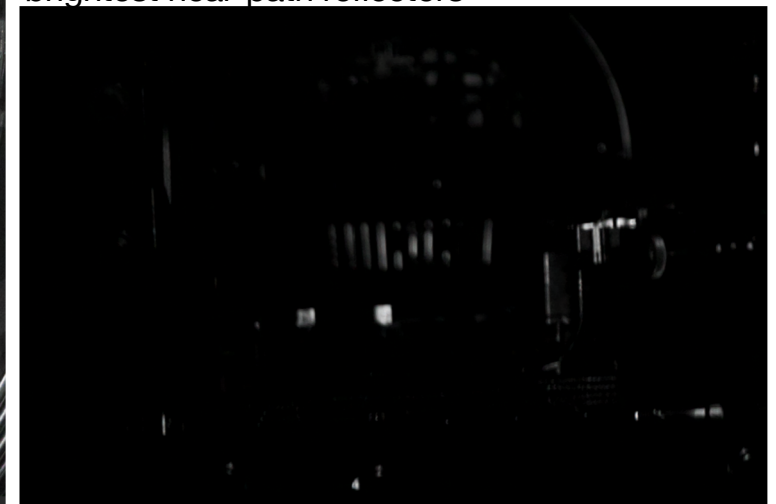
Note that the illuminator has a much more angularly-uniform distribution of light than the light normally scattered from the BBS, so reflectors at small angles from the beam path are much more important (see BRDF weighting on next page).



Close up of SPI bracket retroreflectors



Shorter exposure showing brackets to be the brightest near-path reflectors



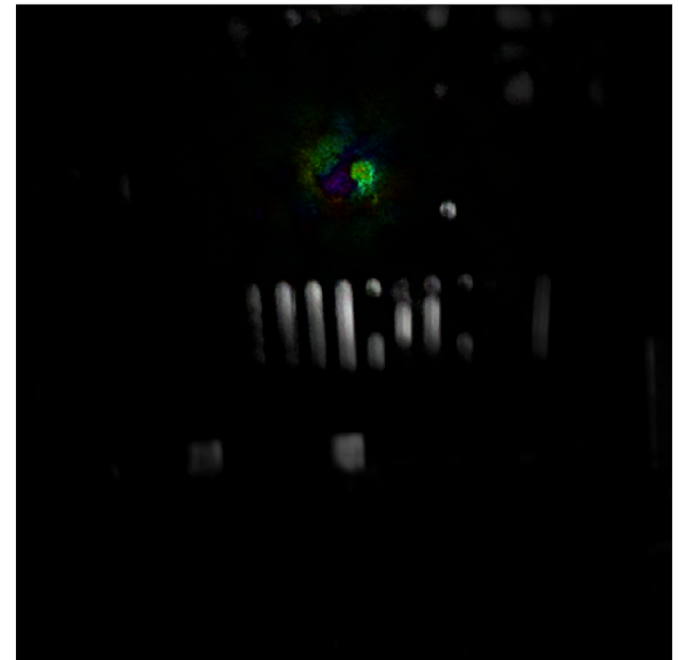
Original



Radially weighted by BRDF of test mass



Weighted by square of BRDF to show recombination power



Shows that the bracket reflection is not as important as the reflection from the lower part of HAM2